



---

Fall 9-1-1977

## Table Of Contents

Follow this and additional works at: <https://scholarlycommons.law.wlu.edu/wlulr>

---

### Recommended Citation

*Table Of Contents*, 34 Wash. & Lee L. Rev. (1977).

Available at: <https://scholarlycommons.law.wlu.edu/wlulr/vol34/iss4/1>

This Prefatory Matter is brought to you for free and open access by the Washington and Lee Law Review at Washington and Lee University School of Law Scholarly Commons. It has been accepted for inclusion in Washington and Lee Law Review by an authorized editor of Washington and Lee University School of Law Scholarly Commons. For more information, please contact [christensena@wlu.edu](mailto:christensena@wlu.edu).

# Washington and Lee Law Review

Member of the National Conference of Law Reviews

Volume XXXIV

Fall 1977

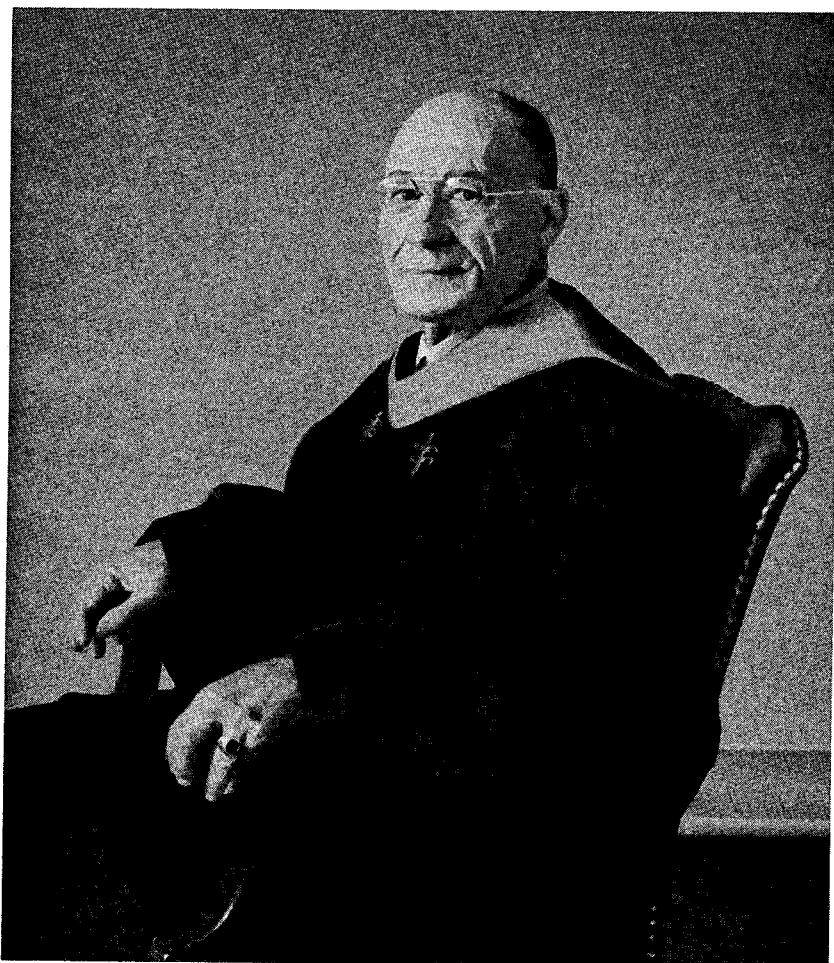
Number 4

## CONTENTS

	PAGE
<b>ARTICLES</b>	
<i>The John Randolph Tucker Lecture</i>	
The Appellate Jurisdiction of the Supreme Court: Reflections on the Law and the Logistics of Direct Review . . . . . <i>Herbert Wechsler</i>	1043
<b>NOTES AND COMMENTS</b>	
Constitutionality of Mechanics' Liens Statutes . . . . .	1067
Sentencing Antitrust Felons . . . . .	1097
The Right to Know and School Board Censorship of High School Book Acquisitions . . . . .	1115
Emerging Concepts of Federalism: Limitations on the Spending Power and National Health Planning . . . . .	1133
Reconciling Comparative Negligence, Contribution, and Joint and Several Liability . . . . .	1159
Alternatives to the Medical Malpractice Phenomenon: Damage Limitations, Malpractice Review Panels and Countersuits . . . . .	1179
Caesar's Wife Revisited — Judicial Disqualification after the 1974 Amendments . . . . .	1201
Virginia Subdivision Law: An Unreasonable Burden on the Unwary . . . . .	1223
Apportioning Maritime Collision Damages: Applying the Rule of <i>Reliable Transfer</i> . . . . .	1237







DEAN CHARLES PORTERFIELD LIGHT, JR.  
1902-1976